

# Robust S-transform based on L-DFT

E. Sejdić and I. Djurović

Time-frequency representations of signals obtained by the S-transform can be very sensitive to the presence of  $\alpha$ -stable noise. An algorithm for the robust S-transform is introduced. The proposed scheme is based on the L-DFT. The results of conducted numerical analysis show a significantly enhanced performance of the proposed scheme compared to the standard S-transform.

*Introduction:* Time-frequency representations (TFRs) indicate variations of the signal spectral characteristics with time, and they are the natural choice as an analysis tool for the non-stationary signals [1]. The main objectives of the various types of time-frequency distribution functions (e.g. Wigner-Ville distribution (WVD) [1], short-time Fourier transform (STFT) [1], the S-transform [2]) are to obtain time-varying spectral density function with higher resolution, and to overcome any existing interferences [1].

In this Letter, we address the performance of the S-transform for signals contaminated with  $\alpha$ -stable noise (e.g. [3]). Previous contributions only addressed the performance of traditional TFRs (e.g. the WVD and STFT in [4]), while the S-transform is a hybrid of short-time Fourier analysis and wavelet analysis. It employs variable window length producing higher frequency resolution at lower frequencies and sharper time localisation for higher frequencies. This property of the S-transform makes it particularly suitable for analysis of signals with hyperbolic or sinusoidally modulated components. In addition, the phase information provided by the S-transform is referenced to the time origin, and therefore provides supplementary information about spectra which is not available from locally referenced phase information obtained by the continuous wavelet transform [2]. For this reason, the S-transform has already been applied in many fields (e.g. [5]). Nevertheless, the S-transform exhibits very poor performance for signals contaminated with  $\alpha$ -stable noise (i.e. impulse noise). To resolve this issue we propose an algorithm for the robust S-transform based on the L-DFT. The results of the numerical analysis show that the proposed scheme achieves significantly enhanced performance.

*Proposed scheme:* The standard S-transform of a function  $x(t)$  is given by a convolution integral as [2]:

$$S_x(t, f) = \int_{-\infty}^{+\infty} x(\tau) \omega(t - \tau, f) \exp(-j2\pi f \tau) d\tau \quad (1)$$

where a window function used in S-transform is actually a scalable Gaussian function defined as

$$\omega(t, f) = \frac{1}{\sigma(f)\sqrt{2\pi}} \exp\left(-\frac{t^2}{2\sigma^2(f)}\right) \quad (2)$$

with a constraint  $\int_{-\infty}^{+\infty} \omega(t - \tau, f) d\tau = 1$ . The advantage of the S-transform over the STFT is that the variance  $\sigma(f)$  is actually a function of frequency,  $f$ , defined as  $\sigma(f) = 1/|f|$ . If only discrete samples of the continuous signal are available, the S-transform is implemented using the discrete Fourier transform (DFT) [2]. However, given that the standard DFT is sensitive to the impulse noise, then the representation obtained by the S-transform is greatly influenced by such noise. To alleviate these effects, we propose implementation of the S-transform using the L-DFT [4]. The L-DFT is introduced as a trade-off between robustness to impulse noise influence and the quality of the spectra estimate.

Assume that we have  $N$  samples of  $x(t)$  obtained with a sampling period  $T_s$ . Then, the robust estimate of the S-transform is given by

$$S_x(n, k) = \frac{1}{N} \sum_{m=0}^{N-1} X_L(k+m) W(m, k) \exp(-j2\pi mn/N) \quad (3)$$

where  $W(m, k)$  is the DFT of the discretised window function and  $X_L(k)$  is given by

$$X_L(k) = \sum_{q=1}^{N-1} \beta_q \mathbf{r}_q(k) + j \sum_{q=1}^{N-1} \beta_q \mathbf{i}_q(k) \quad (4)$$

with  $n, k(m) = 0, \dots, N-1$  representing discretised time and frequency;  $\mathbf{r}_q(k)$  and  $\mathbf{i}_q(k)$  belonging to the sets  $\mathbf{R} = \{\text{Re}\{Nx(n) \exp(-j2\pi kn/N)\}; n \in [0, N-1]\}$  and  $\mathbf{I} = \{\text{Im}\{Nx(n) \exp(-j2\pi kn/N)\}; n \in [0, N-$

1]\}, respectively, sorted into the non-increasing sequences. In this Letter, we implement the trimmed mean form of the L-DFT [4], where  $\beta_q$  coefficients in the above equation are given as

$$\beta_q = \begin{cases} \frac{1}{4\gamma + N(1-2\gamma)} & q \in [(N-2)\gamma, \gamma(2-N) + N - 1] \\ 0 & \text{elsewhere} \end{cases} \quad (5)$$

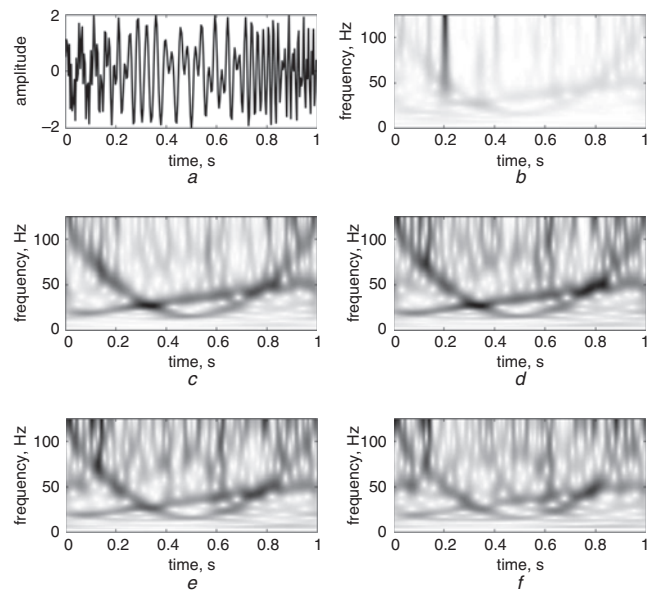
The proposed implementation of the S-transform, given by (3), reduces to the standard S-transform for  $\gamma = 0$ , while for  $\gamma = 0.5$  we obtain the robust median-based S-transform. In general, the proposed scheme provides us with a trade-off between spectra quality and impulse noise removal for  $\gamma \in ]0, 0.5[$ .

*Results and discussion:* We begin the performance analysis of the algorithm with an analysis of the following signal:

$$x_1(t) = \cos\left(\frac{800\pi}{3}(t-0.5)^3 + 30\pi t\right) + \cos(30\pi t + 40\pi t^2) \quad (6)$$

where  $0 \leq t < 1$ , and the assumed sampling period is  $T_s = 1/256$  s. The signal is contaminated with additive  $\alpha$ -stable noise. In particular, we used Cauchy noise ( $\alpha = 1$ ) with the dispersion factor equal to 0.1.

The signal consists of two components: a linear FM component and a component with a hyperbolic frequency behaviour. Using the standard algorithm, shown in Fig. 1b, we cannot detect the components, since the noise completely masks these components in the time-frequency domain. Very similar results are obtained with the realisation of the S-transform based on the median-filtered DFT as shown in Fig. 1f. Improvements in the component localisations, i.e. the ability to detect the presence of both components, can be noticed when the S-transform is implemented with the L-DFT, as shown in Figs. 1c-e. In particular, as the value of  $\gamma$  decreases, we can observe a higher energy localisation in the time-frequency domain. The presence of two components becomes rather obvious even in strong noise.



**Fig. 1** Various realisations of S-transforms: (Fig. 1b) standard S-transforms; and several realisations of robust S-transform: (Fig. 1c)  $\gamma = 0.125$ ; (Fig. 1d)  $\gamma = 0.250$ ; (Fig. 1e)  $\gamma = 0.375$ ; (Fig. 1f)  $\gamma = 0.5$ . Time-domain representation of noise-free  $x_1(t)$  is depicted in Fig. 1a

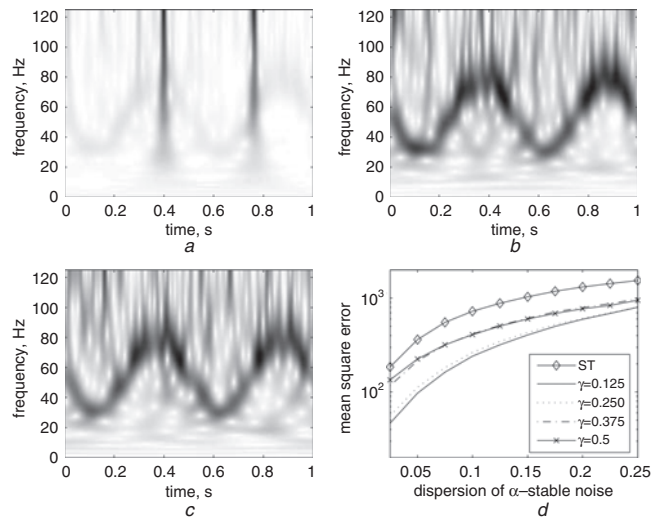
To understand the effects of the proposed S-transform implementation on the estimation of instantaneous frequency (IF), we consider the following signal:

$$x_2(t) = \sin(110\pi t + 4\pi \cos(4\pi t)) \quad (7)$$

where  $x_2(t)$  is only defined in the interval given by  $0 \leq t < 1$ , and the sampling period is  $T_s = 1/256$  s. The signal is contaminated with additive  $\alpha$ -stable noise ( $\alpha = 1$ ), the dispersion factor of which is varied between 0.025 and 0.25 in steps of 0.025. The IF is estimated from the peaks of the magnitude of the time-frequency transform [6], and the mean square error (MSE) of the estimator is evaluated for the standard S-transform and the S-transform based on L-DFT with

varying  $\gamma$  parameter ( $\gamma = \{0, 0.125, 0.250, 0.375, 0.5\}$ ). The error is defined as a difference between the true value of the IF and the estimated value. The MSE values represent an average of 4000 realisations.

The results in Fig. 2d demonstrate the behaviour of the instantaneous frequency estimator based on the various implementations of the S-transform. The best performance is achieved for  $\gamma = 0.125$ . In general, it is clear that the L-DFT based S-transform produces smaller MSE compared to the standard S-transform, and hence, a more accurate estimation of the instantaneous frequency. Such behaviour of the estimator is explained by TFRs of  $x_2(t)$  generated by the standard S-transform and the L-DFT based transforms with  $\gamma = 0.25$  and  $\gamma = 0.5$ , depicted in Figs. 2a–c, obtained for the dispersion factor equal to 0.15. From these representations, it is clear that the robust S-transform is capable of tracking the sinusoidally modulated component. On the other hand, the standard S-transform exhibits a very poor performance as shown in Fig. 2a.



**Fig. 2** Various realisations of S-transform

- a Standard form ( $\gamma = 0$ )
- b L-DFT based transform ( $\gamma = 0.25$ )
- c Median-based transform ( $\gamma = 0.5$ )
- d Mean square error for instantaneous frequency estimation

**Conclusion:** A novel approach for diminishing the effects of  $\alpha$ -stable noise on the time-frequency representations of non-stationary signals obtained by the S-transform is proposed. The new algorithm is based on the L-DFT. The conducted numerical analysis showed that the new scheme significantly enhanced the time-frequency representations of non-stationary signals contaminated with the impulse noise. Additionally, for such signals the robust S-transform provided a more accurate approach for the instantaneous frequency estimation than the standard S-transform.

© The Institution of Engineering and Technology 2010

12 August 2009

doi: 10.1049/el.2010.2334

E. Sejdić (Bloorview Research Institute, Bloorview Kids Rehab and the Institute of Biomaterials and Biomedical Engineering, University of Toronto, Toronto, Ontario, Canada)

E-mail: esejdic@ieee.org

I. Djurović (Electrical Engineering Department, University of Montenegro, Podgorica, Montenegro)

## References

- 1 Cohen, L.: 'Time-frequency analysis' (Prentice Hall, Englewood Cliffs, NJ, 1995)
- 2 Stockwell, R.G., Mansinha, L., and Lowe, R.P.: 'Localization of the complex spectrum: the S-transform', *IEEE Trans. Signal Process.*, 1996, **44**, (4), pp. 998–1001
- 3 Shao, M., and Nikias, C.L.: 'Signal processing with fractional lower order moments: stable processes and their applications', *Proc. IEEE*, 1993, **81**, (7), pp. 986–1010
- 4 Djurović, I., Stanković, L.J., and Böhme, J.F.: 'Robust L-estimation based forms of signal transforms and time-frequency representations', *IEEE Trans. Signal Process.*, 2003, **51**, (7), pp. 1753–1761
- 5 Dash, P.K., Panigrahi, B.K., and Panda, G.: 'Power quality analysis using S-transform', *IEEE Trans. Power Deliv.*, 2003, **18**, (2), pp. 406–411
- 6 Sejdić, E., Djurović, I., and Stanković, L.J.: 'Quantitative performance analysis of scalogram as instantaneous frequency estimator', *IEEE Trans. Signal Process.*, 2008, **56**, (8), pp. 3837–3845